

Handwritten musical notation on five staves, primarily consisting of chords and some rhythmic markings:

- Staff 1: G/A , B^b , G/A , B^b
- Staff 2: C/F , A , G , G , $swing$, F , E^b
- Staff 3: F , E^b , C
- Staff 4: $straight$, $E -$, D , G ~~A~~
- Staff 5: C , G , C , $E7/G$
- Staff 6: B^b (66)

Handwritten musical notation on two staves, featuring a sequence of notes and chords:

F $D -$ A B^b C $D -$ $C -$ F/B A^b

Handwritten musical notation on two staves, including a circled section labeled "Drop 2" and various note clusters:

Drop 2

The notation includes several groups of notes, some circled, and a section labeled "Drop 2" which shows a cluster of notes with a downward arrow indicating a drop.

In
sorry
etc

ABABA

the
Golden Car

Aug 97

A b6
C- b6

A

CM

CM

A b6

B b7

+ Seasons blowing

Handwritten musical notation for a 12-measure piece in 3/4 time. The notation is organized into six staves, with measures grouped by vertical bar lines. The chords and notes are as follows:

- Staff 1: G/A, B^b, G/A, B^b
- Staff 2: G/A, B^b, G/A, B^b
- Staff 3: F, A, G, F, E^b
- Staff 4: F, E^b, C, E - D
- Staff 5: G, C, G, C
- Staff 6: C7/G, B^b6, C

The bass line (Staff 6) includes a key signature change to one flat (B^b) and a 6th degree (6) in the second measure.

Dirig Joey

SPURGE

Handwritten musical score for "I got it deep in the heart" by J. Cole. The score is written on ten staves, with lyrics and chords integrated into the notation. The lyrics are: "I got it deep in the heart / I tried so hard to / but why don't they / I'd sacrifice any / inside of the world / don't you know / use yr mentality / Shit each time that /". The chords are written in a simplified notation, often with a letter and a number (e.g., C, F7, Bb, G, D, E7b9). The score includes various musical notations such as notes, rests, and bar lines. The handwriting is in black ink on a white background.

Handwritten musical score for guitar on a six-staff system. The notation includes chords and melodic lines. Chords written include C, G, E, D-, F, B-, Asus, A/C#, C, G, Esus, E, D, and C. The bottom staff contains a complex melodic line with many beamed notes and accidentals.

Handwritten musical score for guitar, featuring a 7th fret barre and various chords. The score is written on five staves. The first staff begins with a 7th fret barre. The chords and notes are as follows:

- Staff 1: 7th fret barre, C (C4), B (B4), A (A4), E (E4), C (C5), B (B5), A (A5), E (E5), C (C6), B (B6), A (A6), E (E6), C (C7).
- Staff 2: C (C4), B (B4), A (A4), E (E4), C (C5), B (B5), A (A5), E (E5), C (C6), B (B6), A (A6), E (E6), C (C7).
- Staff 3: C (C4), B (B4), A (A4), E (E4), C (C5), B (B5), A (A5), E (E5), C (C6), B (B6), A (A6), E (E6), C (C7).
- Staff 4: C (C4), B (B4), A (A4), E (E4), C (C5), B (B5), A (A5), E (E5), C (C6), B (B6), A (A6), E (E6), C (C7).
- Staff 5: C (C4), B (B4), A (A4), E (E4), C (C5), B (B5), A (A5), E (E5), C (C6), B (B6), A (A6), E (E6), C (C7).

the B¹² B

CΔ7 B- ASUS E-

CΔ7 B- B- Gsus

FΔ7 A-

F E- A

A/G GΔ B-/A A

A/G GΔ7 B

The image shows handwritten musical notation on a series of staves. The notation includes guitar chords (CΔ7, B-, ASUS, E-, FΔ7, F, A, A/G, GΔ, B-/A, GΔ7, B) and bass lines (F, E, A, G, B). The chords are written in a shorthand notation, and the bass lines are written in a shorthand notation. The notation is written in black ink on a white background. The staves are arranged in a vertical column, with each staff containing a measure of music. The notation is written in a shorthand notation, and the bass lines are written in a shorthand notation. The notation is written in black ink on a white background. The staves are arranged in a vertical column, with each staff containing a measure of music. The notation is written in a shorthand notation, and the bass lines are written in a shorthand notation. The notation is written in black ink on a white background. The staves are arranged in a vertical column, with each staff containing a measure of music.

D^{b6}

M

52.50

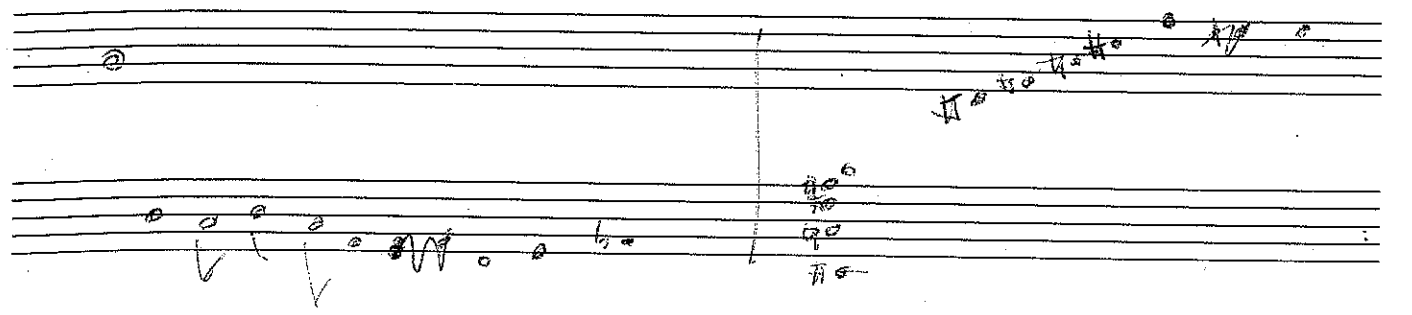
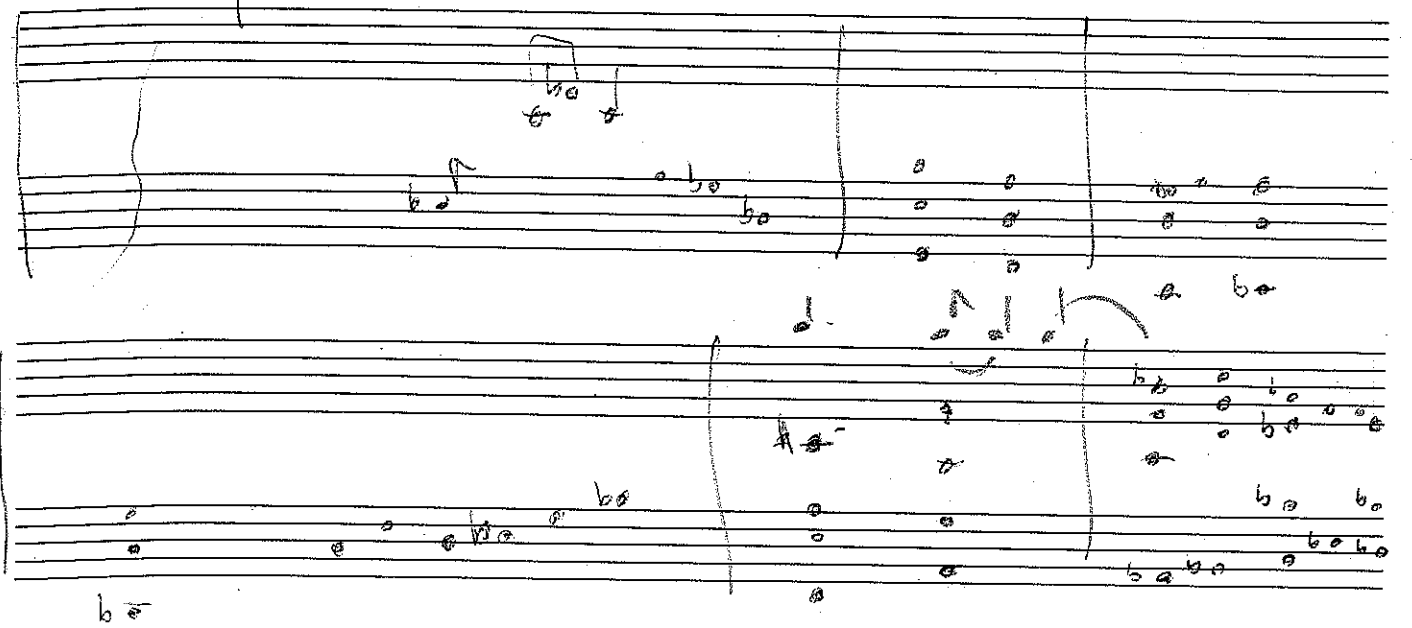
52.40
49.00



48.43
45.10

F7/A

44.34



44.34
43.40
40.40

40-26

D-

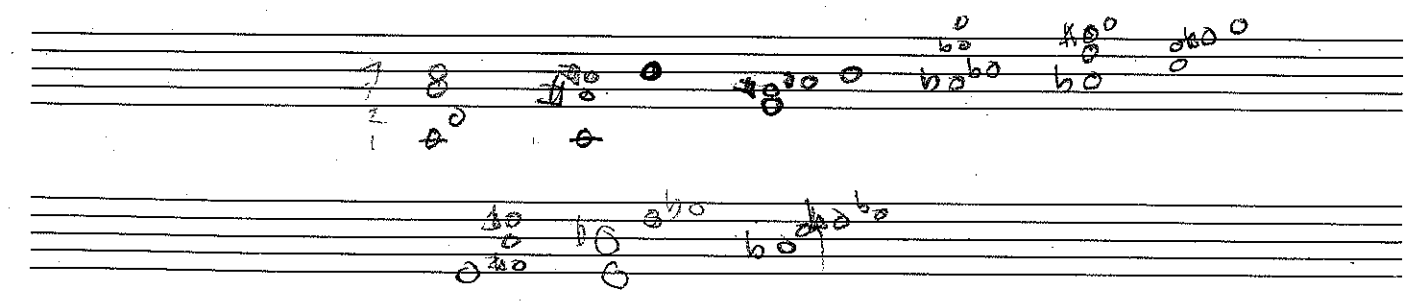
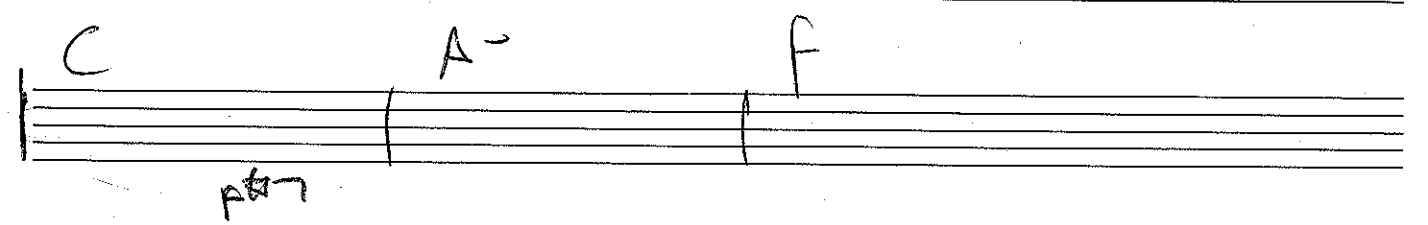
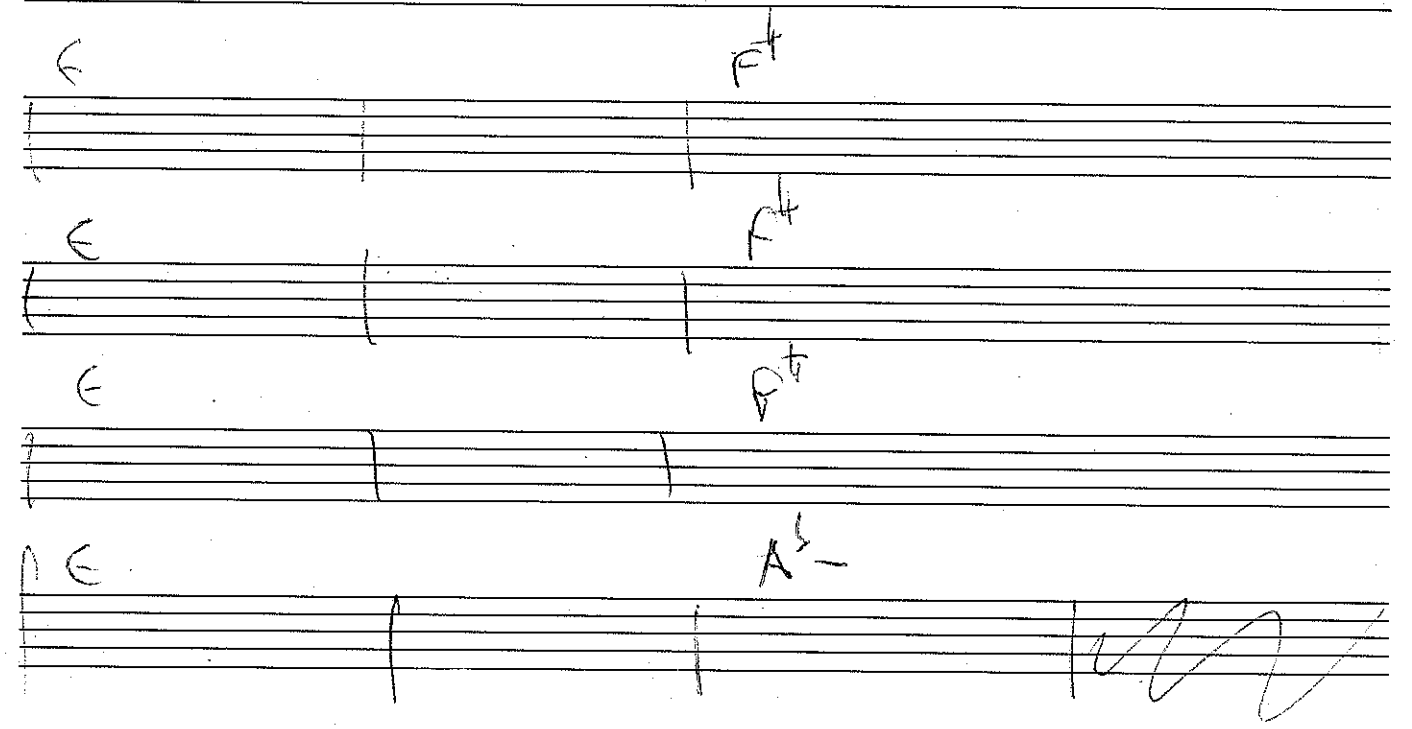
37-11
33-20

33-05
30-35

A^{b7}

F^A7

E



D-

A^b7 F[#]7

E^b D^b7

B A

D- A-

B^b C7

D A

G A

A^b P[#] A^b P

E

C-

B^b- G

A^b P[#]

C D^b

A^b F[#]7

D- E^b

Bass riff A-

B

Handwritten musical notation on the left page, consisting of ten staves. The notation includes various notes, rests, and accidentals, with some notes marked with 'b' (flat) and 'h' (natural). The notation is written in a cursive, handwritten style.

Rhym

Handwritten musical notation on the right page, consisting of ten staves. The notation includes various notes, rests, and accidentals, with some notes marked with 'b' (flat) and 'h' (natural). The notation is written in a cursive, handwritten style. The first staff has a '2' above it, and the second staff has a '3' above it. The notation is written in a cursive, handwritten style.

B B^b B^b C

F G F/A

C/B A-11 C- B-

G- C/B A-11 C B-

CSUS

to
pa
2
to
2
to
2
to
2

D D^b C

C-/B^b C- A^b-b₆

F G-/F E^bSUS

D^b C

chaser multi cum

commissioed
hick me

3/4 * $\frac{b_0}{\text{diagram}}$

///

to
pa
2
to
2
to
2
to
2

1945-11

1 f^A - 1

06

[illegible]

A-

Handwritten musical notation on the left page, featuring multiple staves with notes, rests, and various chord symbols. The notation includes:

- Staff 1: Notes with a flat sign (b) and a sharp sign (#).
- Staff 2: Notes with a flat sign (b) and a sharp sign (#).
- Staff 3: Notes with a flat sign (b) and a sharp sign (#).
- Staff 4: Notes with a flat sign (b) and a sharp sign (#).
- Staff 5: Notes with a flat sign (b) and a sharp sign (#).
- Staff 6: Notes with a flat sign (b) and a sharp sign (#).
- Staff 7: Notes with a flat sign (b) and a sharp sign (#).
- Staff 8: Notes with a flat sign (b) and a sharp sign (#).
- Staff 9: Notes with a flat sign (b) and a sharp sign (#).
- Staff 10: Notes with a flat sign (b) and a sharp sign (#).
- Staff 11: Notes with a flat sign (b) and a sharp sign (#).
- Staff 12: Notes with a flat sign (b) and a sharp sign (#).
- Staff 13: Notes with a flat sign (b) and a sharp sign (#).
- Staff 14: Notes with a flat sign (b) and a sharp sign (#).
- Staff 15: Notes with a flat sign (b) and a sharp sign (#).
- Staff 16: Notes with a flat sign (b) and a sharp sign (#).
- Staff 17: Notes with a flat sign (b) and a sharp sign (#).
- Staff 18: Notes with a flat sign (b) and a sharp sign (#).
- Staff 19: Notes with a flat sign (b) and a sharp sign (#).
- Staff 20: Notes with a flat sign (b) and a sharp sign (#).

A-

8 bars

Handwritten musical notation on the right page, featuring multiple staves with notes, rests, and various chord symbols. The notation includes:

- Staff 1: Notes with a flat sign (b) and a sharp sign (#).
- Staff 2: Notes with a flat sign (b) and a sharp sign (#).
- Staff 3: Notes with a flat sign (b) and a sharp sign (#).
- Staff 4: Notes with a flat sign (b) and a sharp sign (#).
- Staff 5: Notes with a flat sign (b) and a sharp sign (#).
- Staff 6: Notes with a flat sign (b) and a sharp sign (#).
- Staff 7: Notes with a flat sign (b) and a sharp sign (#).
- Staff 8: Notes with a flat sign (b) and a sharp sign (#).
- Staff 9: Notes with a flat sign (b) and a sharp sign (#).
- Staff 10: Notes with a flat sign (b) and a sharp sign (#).
- Staff 11: Notes with a flat sign (b) and a sharp sign (#).
- Staff 12: Notes with a flat sign (b) and a sharp sign (#).
- Staff 13: Notes with a flat sign (b) and a sharp sign (#).
- Staff 14: Notes with a flat sign (b) and a sharp sign (#).
- Staff 15: Notes with a flat sign (b) and a sharp sign (#).
- Staff 16: Notes with a flat sign (b) and a sharp sign (#).
- Staff 17: Notes with a flat sign (b) and a sharp sign (#).
- Staff 18: Notes with a flat sign (b) and a sharp sign (#).
- Staff 19: Notes with a flat sign (b) and a sharp sign (#).
- Staff 20: Notes with a flat sign (b) and a sharp sign (#).

Handwritten musical notation on the left page, first system. The notation includes notes and chords written above and below the staff lines.

Notes above staff: B, A^b, E^b, ~~D~~, E, F[#], B^c

Notes below staff: B, G^{at}, F[#], A^b, D

Notes below staff: C[#] - , E^b

Handwritten musical notation on the left page, second system.

Notes above staff: B, A^b - , F[#] - , E - , F

Handwritten musical notation on the left page, third system.

Notes above staff: G - / f, E^b, ~~E~~ - , F, G, A/f, G - / B^b

Notes below staff: G - / f, ~~B~~ - , ~~A~~ -

Handwritten musical notation on the left page, fourth system.

Notes above staff: A - , G - , / f

Handwritten musical notation on the left page, fifth system.

Notes above staff: / G - , A - , / B^b, F, / C

Handwritten musical notation on the right page, first system. Includes the title "the B^b n^o B".

Notes above staff: C, B - , the B^b n^o B, A, E -

Notes below staff: C, B^b sus, B^b sus, ~~G~~ sus, F

Notes below staff: A - , f^o, / E^b, A/G, F[#]/E, B/A, D^b7

Notes below staff: A^b 7

Handwritten musical notation on the right page, second system.

Notes below staff: ~~B~~ 7, ~~B~~ 7, A

Handwritten musical notation on the right page, third system. Includes the title "Groove".

Notes below staff: ~~B~~ 7, ~~B~~ 7, A

Handwritten musical notation on a grand staff (treble and bass clefs). The notation includes various chords and melodic lines, with some corrections and annotations.

Staff 1 (Top):

- Chord: E^b pedal
- Chord: $E7/F$
- Chord: $C^\sharp -$
- Chord: $E7$
- Chord: $E7/A$

Staff 2 (Middle):

- Chord: B^b alt
- Chord: A
- Chord: A^\flat
- Chord: B (with a correction mark)
- Chord: F^\flat/B

Staff 3 (Bottom):

- Chord: B
- Chord: B^\flat
- Chord: $A - / F^\sharp$
- Chord: $E -$
- Chord: $C -$
- Chord: A^\flat

The notation is written in black ink on a white background. There are several corrections and annotations, including a "6/4" time signature, a "6/8" time signature, and a "6/4" time signature. The notation is written in a shorthand style, with many notes and chords written in a simplified manner.

Handwritten musical notation on two staves. The first staff has a treble clef and a key signature of one flat (B-flat). The second staff has a bass clef. The notation includes a whole note chord in the first measure, followed by a whole note chord in the second measure. The first staff is labeled with a handwritten 'C' and a handwritten 'A'.

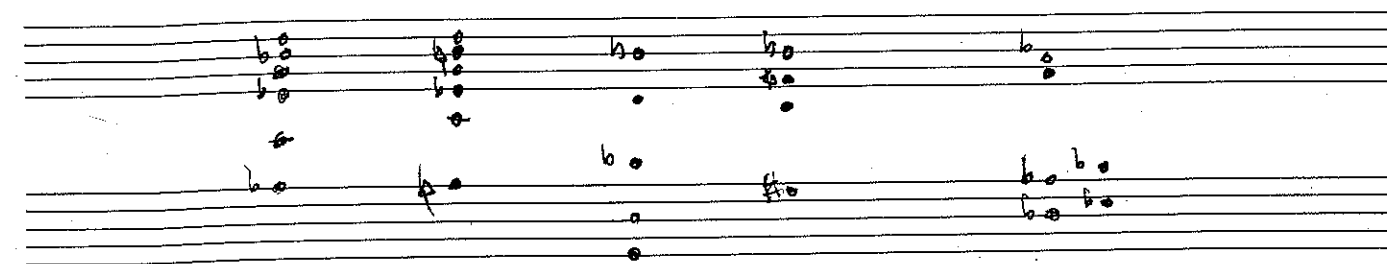
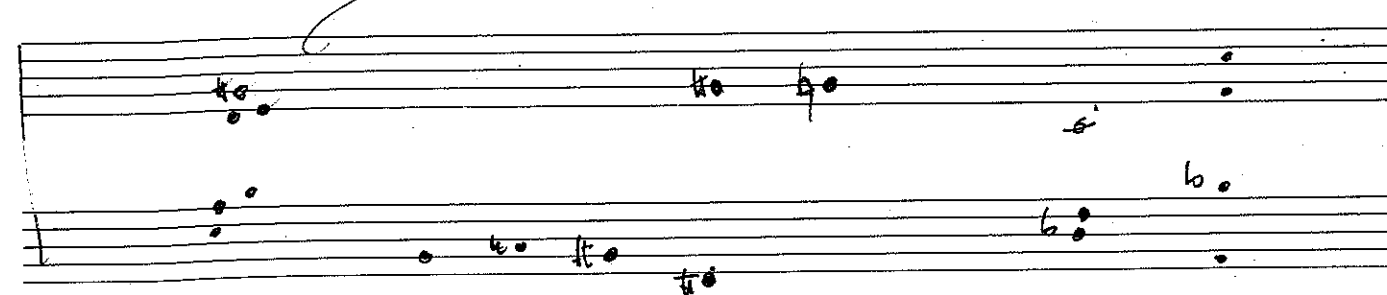
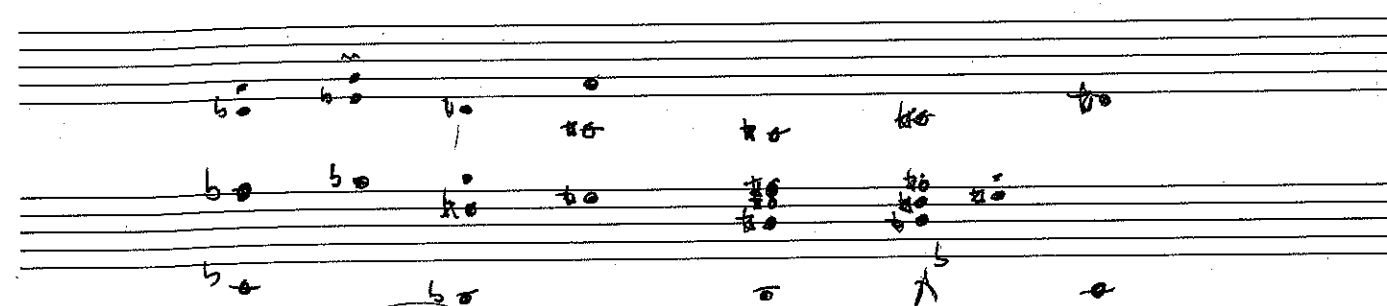
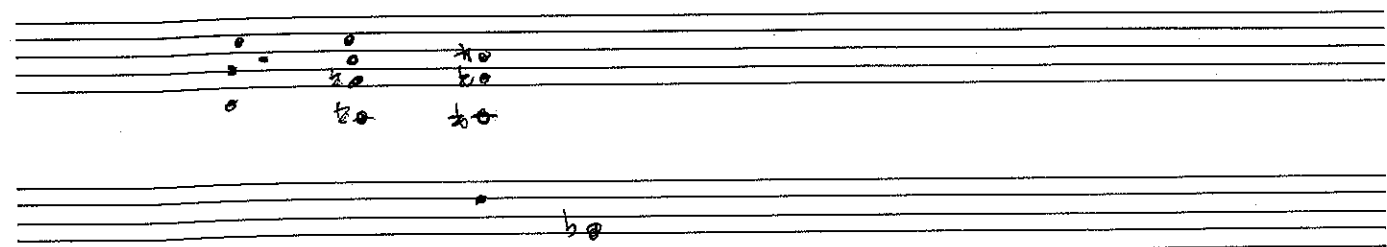
Handwritten musical notation on two staves. The first staff has a treble clef and a key signature of one flat (B-flat). The second staff has a bass clef. The notation includes a whole note chord in the first measure, followed by a whole note chord in the second measure. The first staff is labeled with a handwritten 'C' and a handwritten 'A'.

Handwritten musical notation on two staves. The first staff has a treble clef and a key signature of one flat (B-flat). The second staff has a bass clef. The notation includes a whole note chord in the first measure, followed by a whole note chord in the second measure. The first staff is labeled with a handwritten 'C' and a handwritten 'A'.

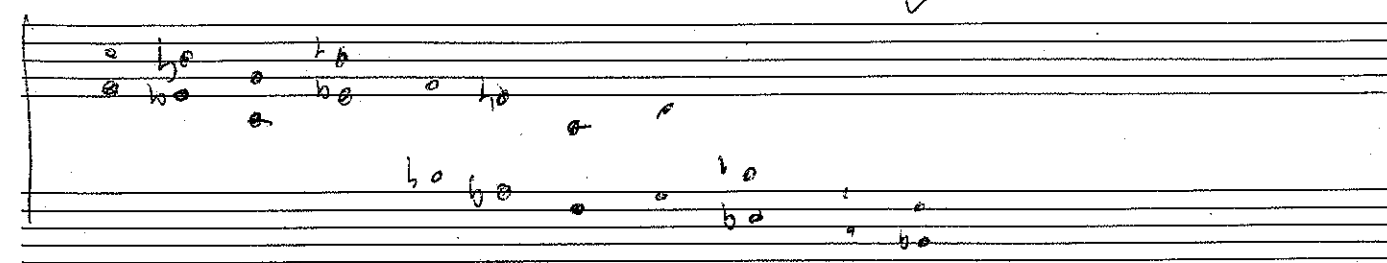
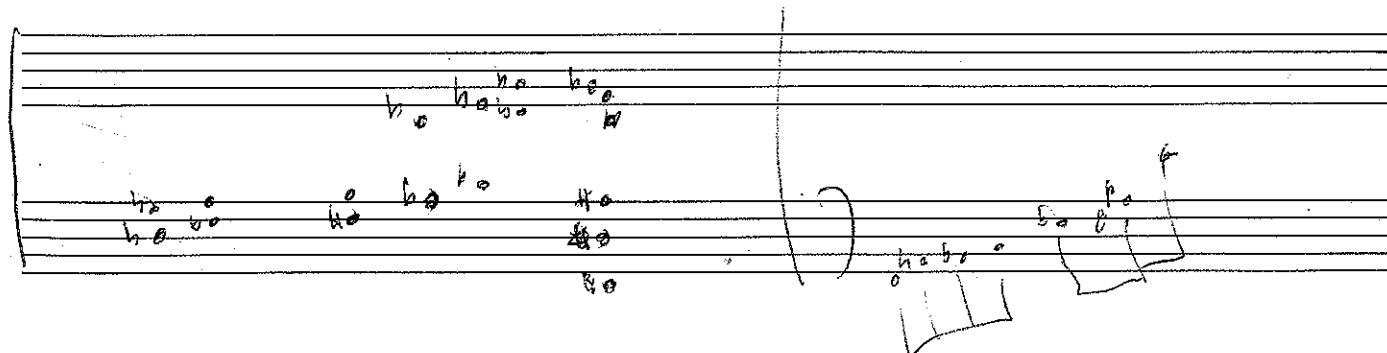
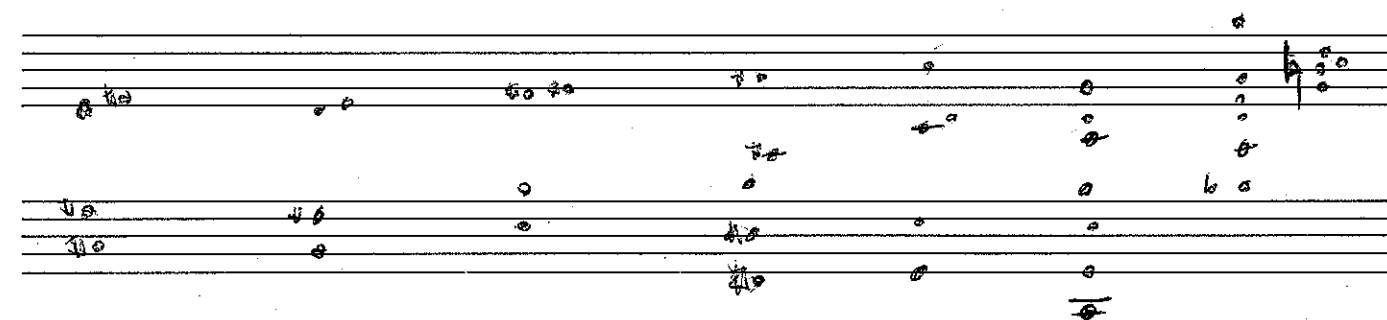
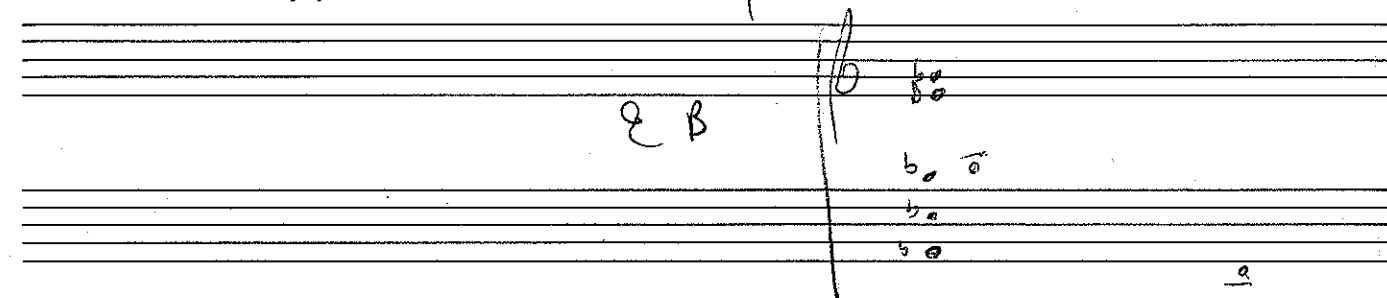
Handwritten musical notation on two staves. The first staff has a treble clef and a key signature of one flat (B-flat). The second staff has a bass clef. The notation includes a whole note chord in the first measure, followed by a whole note chord in the second measure. The first staff is labeled with a handwritten 'C' and a handwritten 'A'.

Handwritten musical notation on two staves. The first staff has a treble clef and a key signature of one flat (B-flat). The second staff has a bass clef. The notation includes a whole note chord in the first measure, followed by a whole note chord in the second measure. The first staff is labeled with a handwritten 'C' and a handwritten 'A'.

Handwritten musical notation on two staves. The first staff has a treble clef and a key signature of one flat (B-flat). The second staff has a bass clef. The notation includes a whole note chord in the first measure, followed by a whole note chord in the second measure. The first staff is labeled with a handwritten 'C' and a handwritten 'A'.



2nd chorus melody over chords L.H



Hand-drawn musical notation on two staves. The top staff features a vertical line and a curved line. The bottom staff has a small circle.

The image shows two staves of handwritten musical notation. The top staff contains a sequence of notes and rests, with a large bracket underneath. The bottom staff contains a sequence of notes and rests, also with a large bracket underneath.

[illegible][illegible]

[illegible][illegible]

WOODSTOCK

Handwritten musical notation on the left page, consisting of four staves. The notation includes various notes, rests, and accidentals (sharps, flats, naturals). The first staff contains notes G, E, F, A, G, E, F, A. The second staff contains notes G, E, F, A, G, E, F, A. The third staff contains notes G, E, F, A, G, E, F, A. The fourth staff contains notes G, E, F, A, G, E, F, A. The notation is written in a stylized, handwritten manner.

Handwritten musical notation on the left page, consisting of a single staff. The notation includes notes, rests, and accidentals (sharps, flats, naturals). The notes are G, E, F, A, G, E, F, A. The notation is written in a stylized, handwritten manner.

Handwritten musical notation on the right page, consisting of four staves. The notation includes various notes, rests, and accidentals (sharps, flats, naturals). The first staff contains notes G, E, F, A, G, E, F, A. The second staff contains notes G, E, F, A, G, E, F, A. The third staff contains notes G, E, F, A, G, E, F, A. The fourth staff contains notes G, E, F, A, G, E, F, A. The notation is written in a stylized, handwritten manner.

Handwritten musical notation on the left page of a notebook. It consists of five systems of staves. The first system has a treble staff with a melodic line and a bass staff with chords. The second system has a treble staff with a melodic line and a bass staff with chords. The third system has a treble staff with a melodic line and a bass staff with chords. The fourth system has a treble staff with a melodic line and a bass staff with chords. The fifth system has a treble staff with a melodic line and a bass staff with chords. The notation is handwritten and includes various musical symbols such as notes, rests, and chord symbols.

6 bars

Handwritten musical notation on the right page of a notebook. It consists of five systems of staves. The first system has a treble staff with a melodic line and a bass staff with chords. The second system has a treble staff with a melodic line and a bass staff with chords. The third system has a treble staff with a melodic line and a bass staff with chords. The fourth system has a treble staff with a melodic line and a bass staff with chords. The fifth system has a treble staff with a melodic line and a bass staff with chords. The notation is handwritten and includes various musical symbols such as notes, rests, and chord symbols.

WOODSTOCK

WOODSTOCK

- Quick, lively
- At a walking pace
- At the original speed
- In a singing style
- Gradually getting louder
- Gradually getting softer
- Expressive
- Loud
- Very loud
- Graceful
- Broadly
- Slow, stately
- Smooth
- Slow
- Majestic
- Emphatic, accented
- Less
- Moderately loud
- Moderately soft
- At a moderate speed
- Very, much
- With movement, animated
- Nobly
- Heavy
- Soft, quiet
- Very soft
- More
- Plucked
- Little
- Fast
- Gradually getting slower
- Held back
- Always
- Accented, forced
- Detached, short
- Silent
- Speed
- Lively, quick

TODAY

